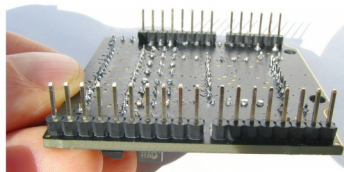


The headers must be separated before soldering:

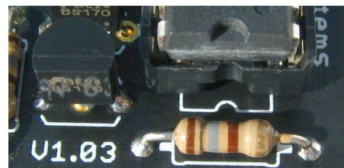
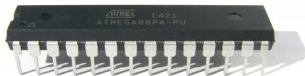


The following headers must be soldered onto the bottom side of the board:

- 1 × 6-pin header
- 2 × 8-pin header
- 1 × 10-pin header



The notch on the IC has to point in the same direction as the mark on the board:

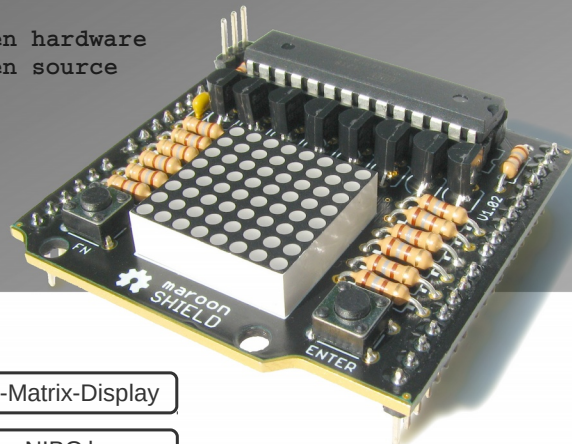


DESIGNED BY NICAİ-SYSTEMS  
AM DENKMAL 8, 52223 STOLBERG, GERMANY

# maroon SHIELD



open hardware  
open source



8 × 8 LED-Matrix-Display

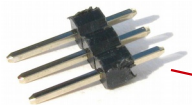
Suitable for NIBO burger

Arduino compatible

DESIGN BY



4 260425 392234



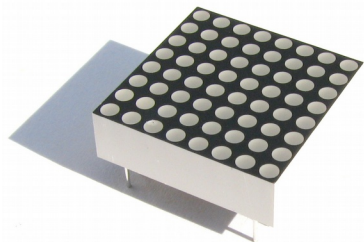
**Jumper**  
3-pole (1×)  
(for firmware update)



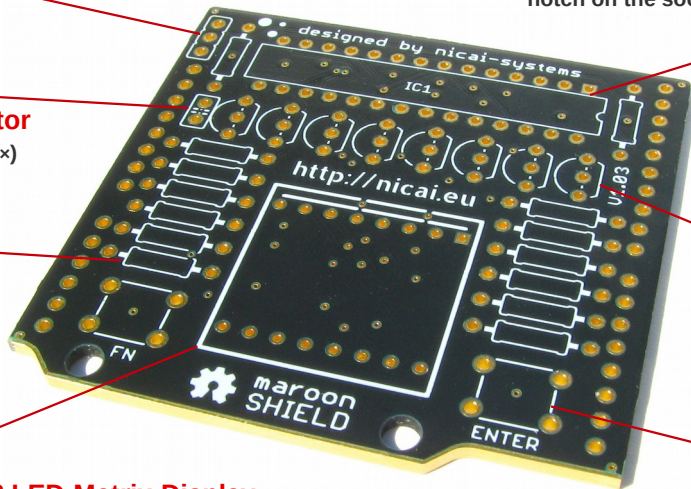
**Capacitor**  
100 nF (1×)



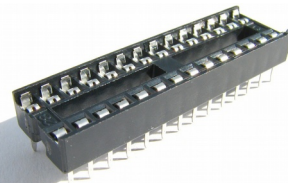
**Resistor**  
180 Ω (14×)



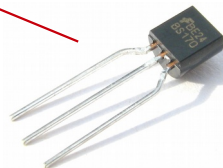
**8 × 8 LED-Matrix-Display**  
Polarity: The imprint on the part has to point in the direction „http://nicai.eu“ at the circuit board!



**IC-socket**  
28-pole (1×)  
Keep attention to the notch on the socket!



**Transistor (N-MOS)**  
BS170 (8×)  
Keep attention to the flattened side!



**Button**  
1.0 Newton (2×)

